

■ Parison Controller

This controller is user friendly because of its easy setting and die gap adjustment.
 All settings are done through jog dial.
 Can expect very high repeatability and accurate input data.
 It is also possible for quick access to the required display through push buttons.
 It has 32 point controller display.



■ Specifications

| Monitor Output Voltage | Power Supply | Power Consumption | Ambient Temperature | Interpolation Points | Sensor Resolving Feature |
|------------------------|--------------------|-------------------|---------------------|--------------------------|--------------------------|
| 0-10V DC | 24 V DC 220V AC | Less than 20 VA | 0~50 C | 256 linear interpolation | 0.05% |

| Settings | Display | No. of Points | Control Mode | | Cycle Mode | CPU |
|---|---------|---------------|-------------------------------|---------------------------------|--|--|
| 1. Digital 2. Jog dial 3. Push button | LCD | 32 | Die gap | Selection of machine type | 1. Off 2. MT1 Automatic time cycle compensation 3. MT2 Automatic time cycle compensation | 1. Digital servo control 2. High performance CPU used to get high response 3. 250 μ sec for Pattern sweeping |
| | | | 1. Convergent 2. Divergent | 1. Continuous 2. Accumulator | | |

■ Model Number Designation

| SK1121 | -D24 | -11 |
|---------------|-----------------------------------|---------------|
| Series number | Power supply | Design number |
| SK1121 | (None) : 220V AC D24 : 24 V DC | 11 |

■ Accessories

1. Parison cylinder:

| Type of mode | Bore Size | Cylinder size |
|--------------|-----------|---------------|
| Continuous | Ø100 | 100x45x10 |
| Continuous | Ø 125 | 125x45x10 |
| Accumulator | Ø 150 | 150x63x25 |

Ordering code Eg: Continuous – 100

2. Parison cylinder Sensor

| Type of mode | Sensor type | Make |
|--------------|-------------|--------|
| Continuous | PY2-F-10S | GEFRAN |
| Continuous | PY2-F-25S | GEFRAN |
| Accumulator | PY2-F-25S | GEFRAN |
| | LTM-375-S | |

Ordering code Eg: Continuous – PY2-F-10S

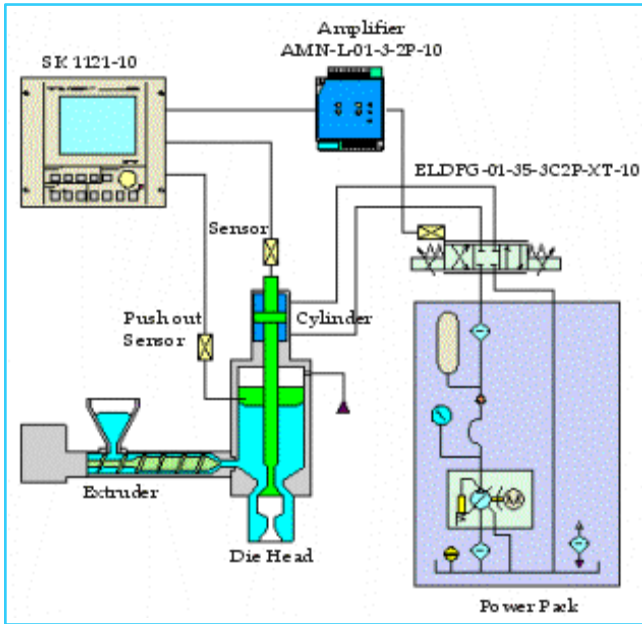
3. Parison Power unit:

| Type of mode | Motor Capacity | Type of Pump | Bore Size |
|--------------|----------------|--------------|-----------|
| Continuous | 3HP | PVR1T-8 | Ø 100 |
| Continuous | 3HP | PVR1T-10 | Ø 125 |
| Accumulator | 5HP | PVR1T-17 | Ø 150 |

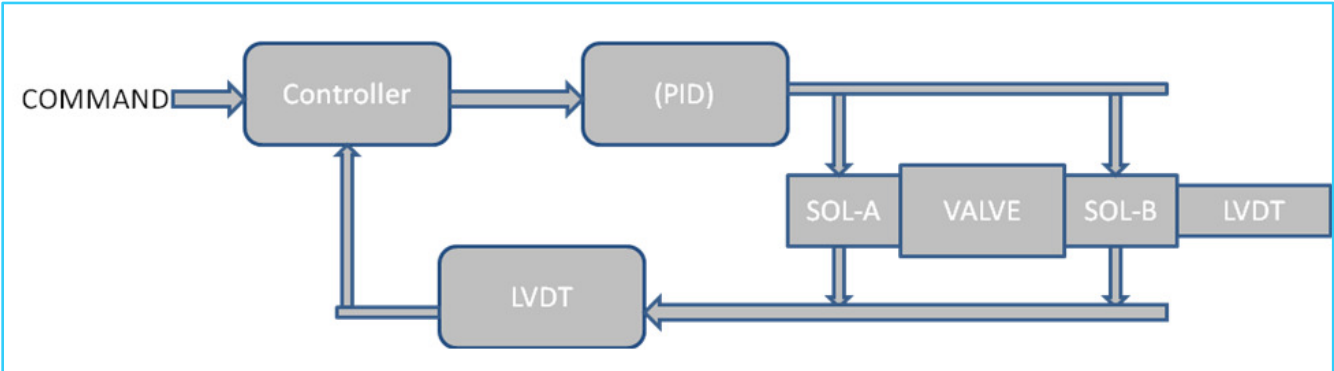
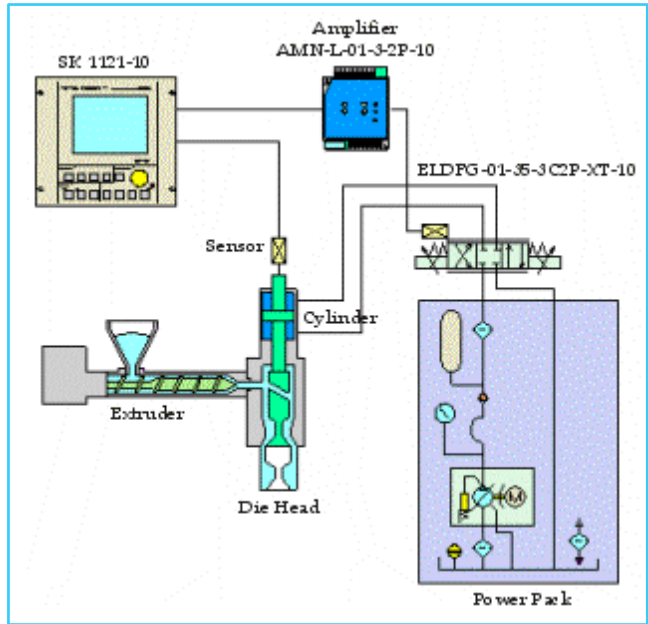
Ordering code Eg. : Continuous – 3HP-PVR1T-8-100

■ **Schematic drawing**

Accumulator mode

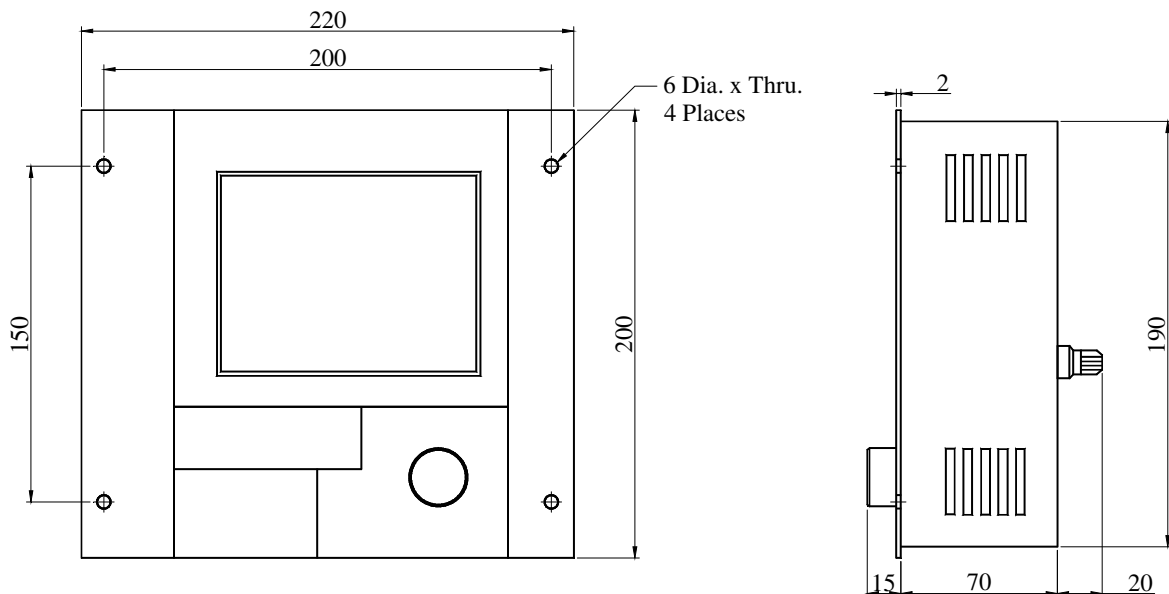


Continuous extrude mode



■ **Overall dimensions**

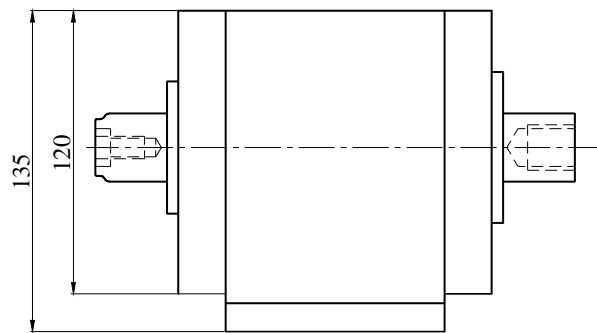
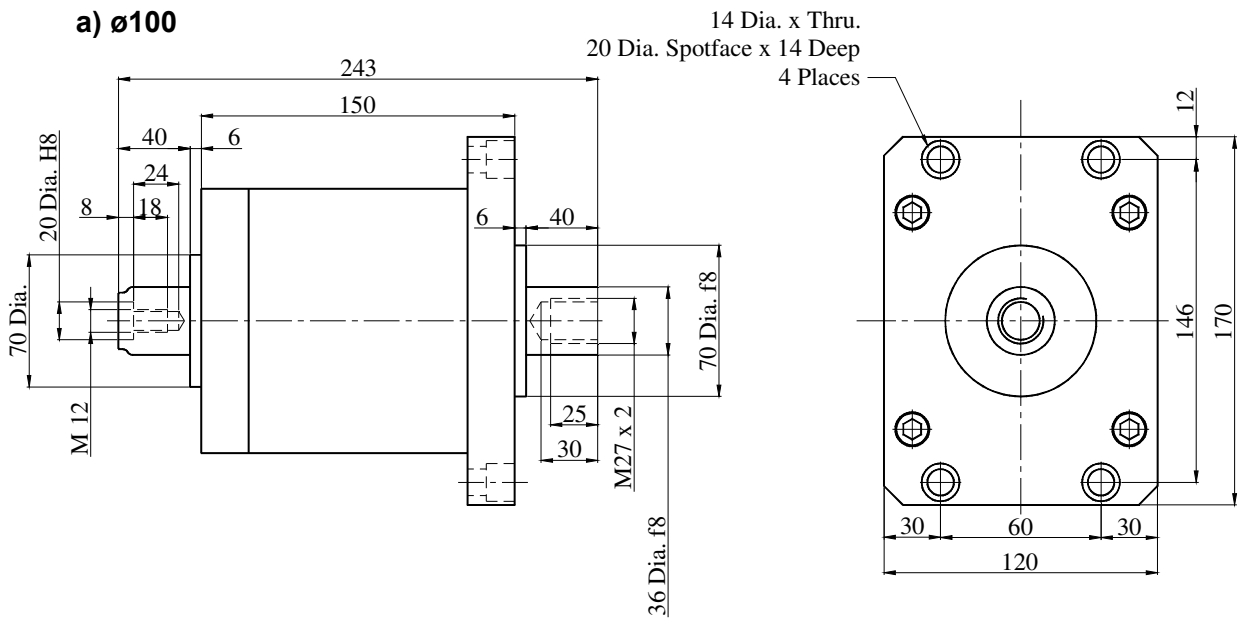
1. Panel



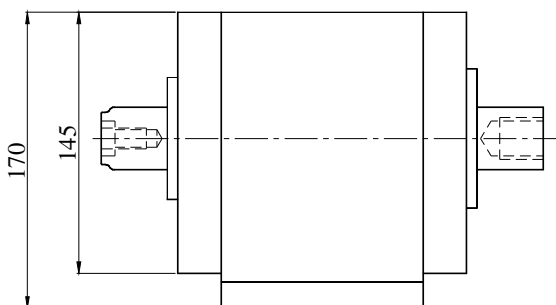
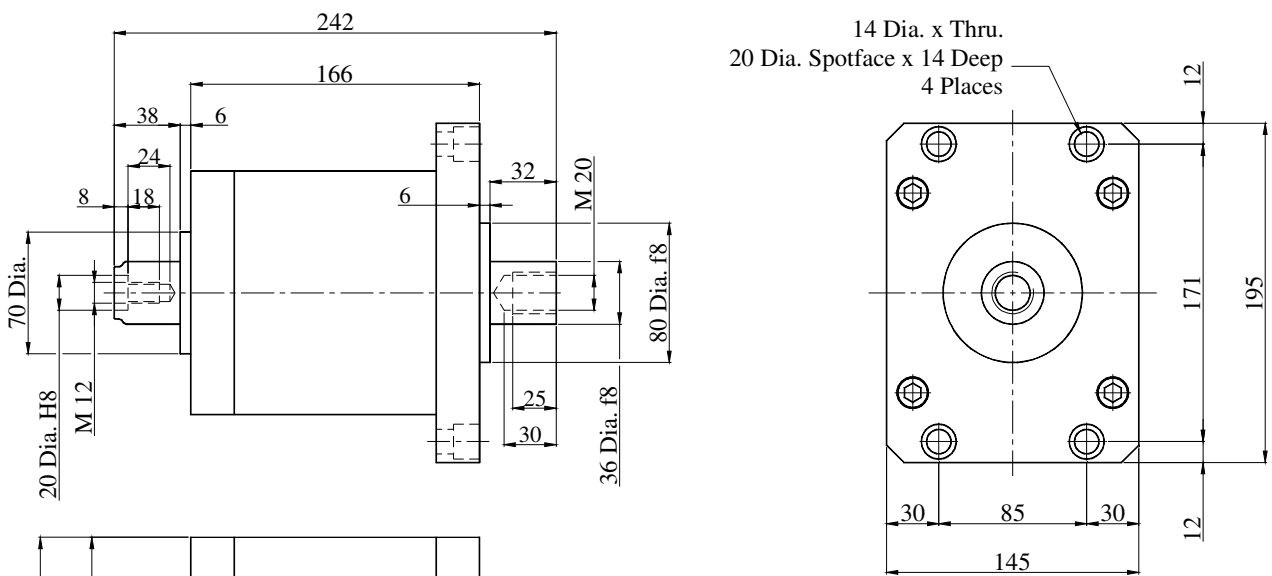
Overall dimensions

• Cylinder

a) ø100

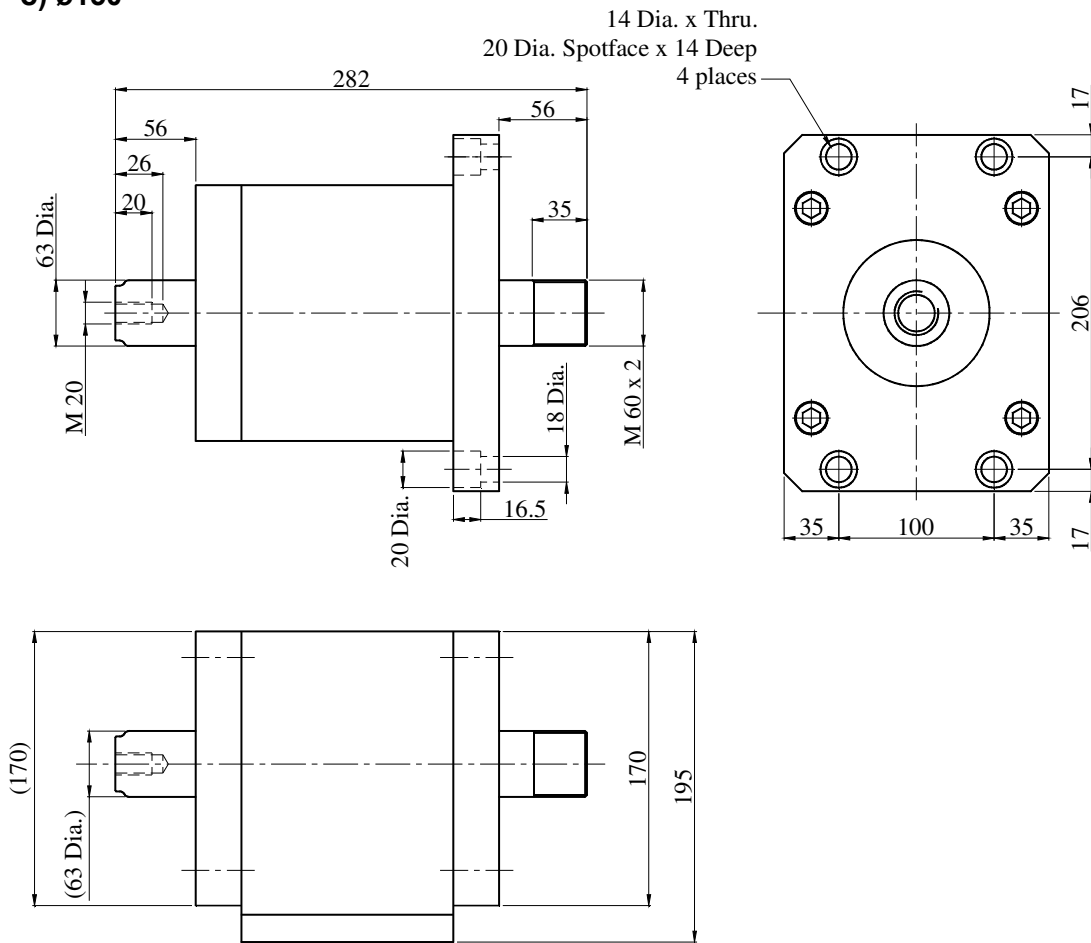


b) ø125



● **Cylinder**

c) ø150



■ **Spare Parts List**

● **List of Seals**

| Sl. No. | Name of Parts | Qty. | | |
|---------|---------------|----------|----------|----------|
| | | Dia. 100 | Dia. 125 | Dia. 150 |
| 1 | Rod Seal | 2 | 2 | 2 |
| 2 | Piston Seal | 1 | 1 | 1 |
| 3 | Wiper Seal | 2 | 2 | 2 |
| 4 | O-Ring | 2 | 2 | 2 |
| 5 | Gland Ring | 2 | 2 | 2 |

Note: When Ordering the seals,
 please specify 1) Seal Kit for Dia. 100 Cylinder
 2) Seal Kit for Dia. 125 Cylinder
 3) Seal Kit for Dia. 150 Cylinder

